

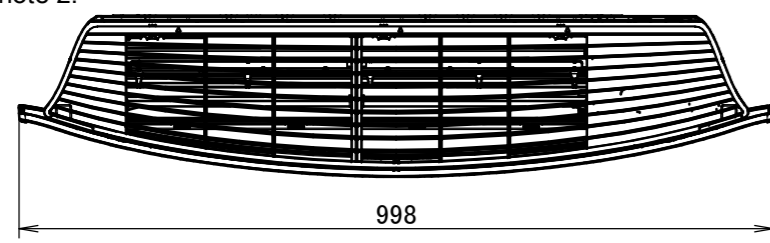
**FTXJ20-35MW**  
**FTXJ20-35MS**

Left side  
See note 2. →

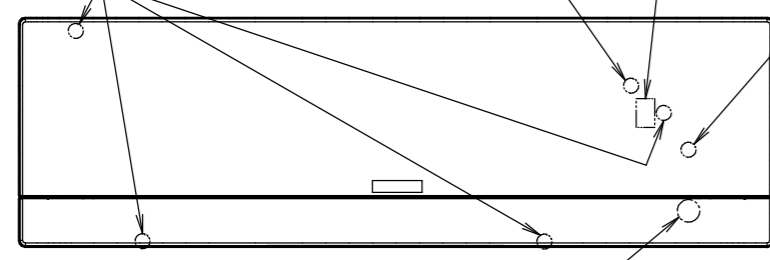
↑ Rear side

↑ Rear side

→ Right side  
See note 2.



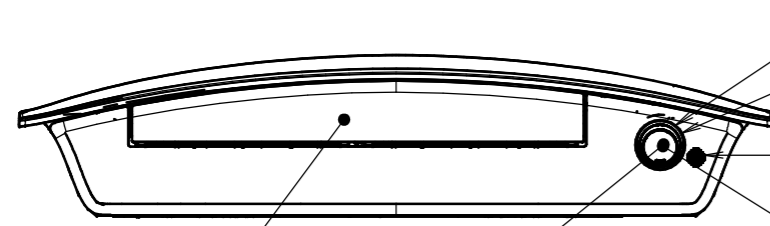
Front grille fixing screws  
Located inside of the unit



Bottom side  
See note 3.

See note 3.  
Bottom side

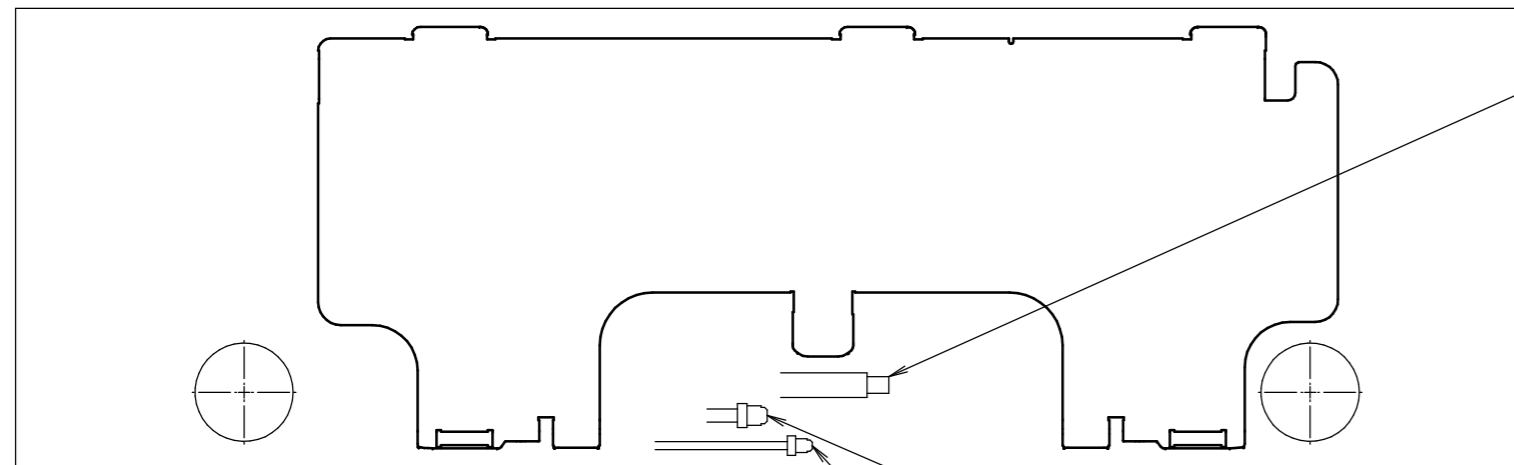
Intelligent Eye sensor



Flap

Indoor unit On/OFF switch

**Bottom view**

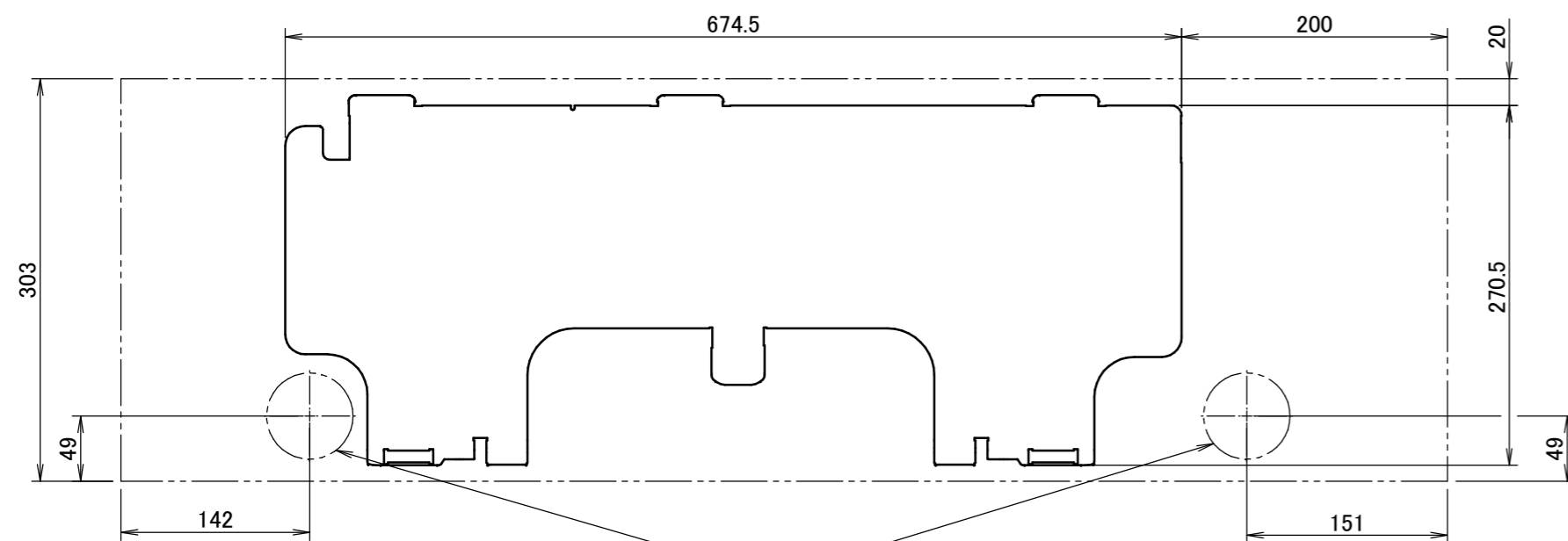


Drain hose  
Connecting part  
Inside diameter: 16mm  
Outside diameter: 18mm  
The length of the connection hose outside the unit is 465mm.

Gas pipe  $\varnothing 9.5\text{CuT}$   
The length of the pipe outside the unit is 350mm.

Liquid pipe  $\varnothing 6.4$   
The length of the pipe outside the unit is 400mm.

**Standard location of holes in the wall**



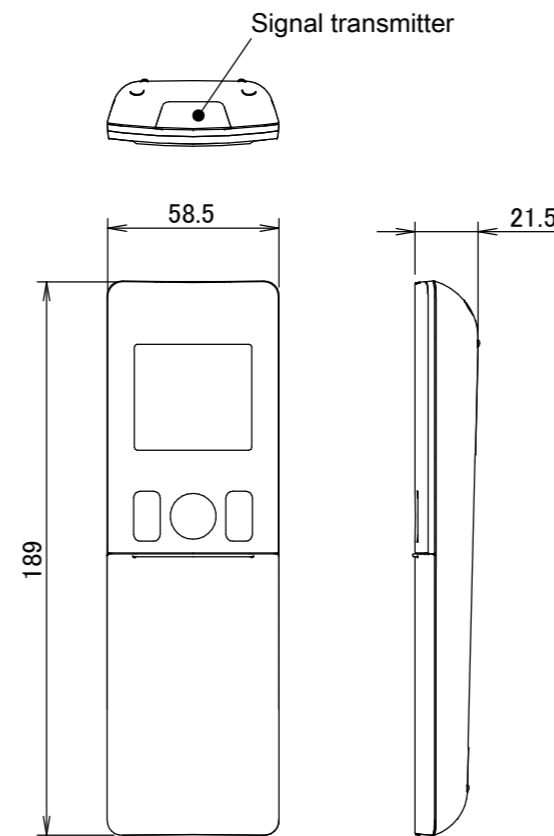
$\varnothing 65$  Hole for embedded piping

**Notes**

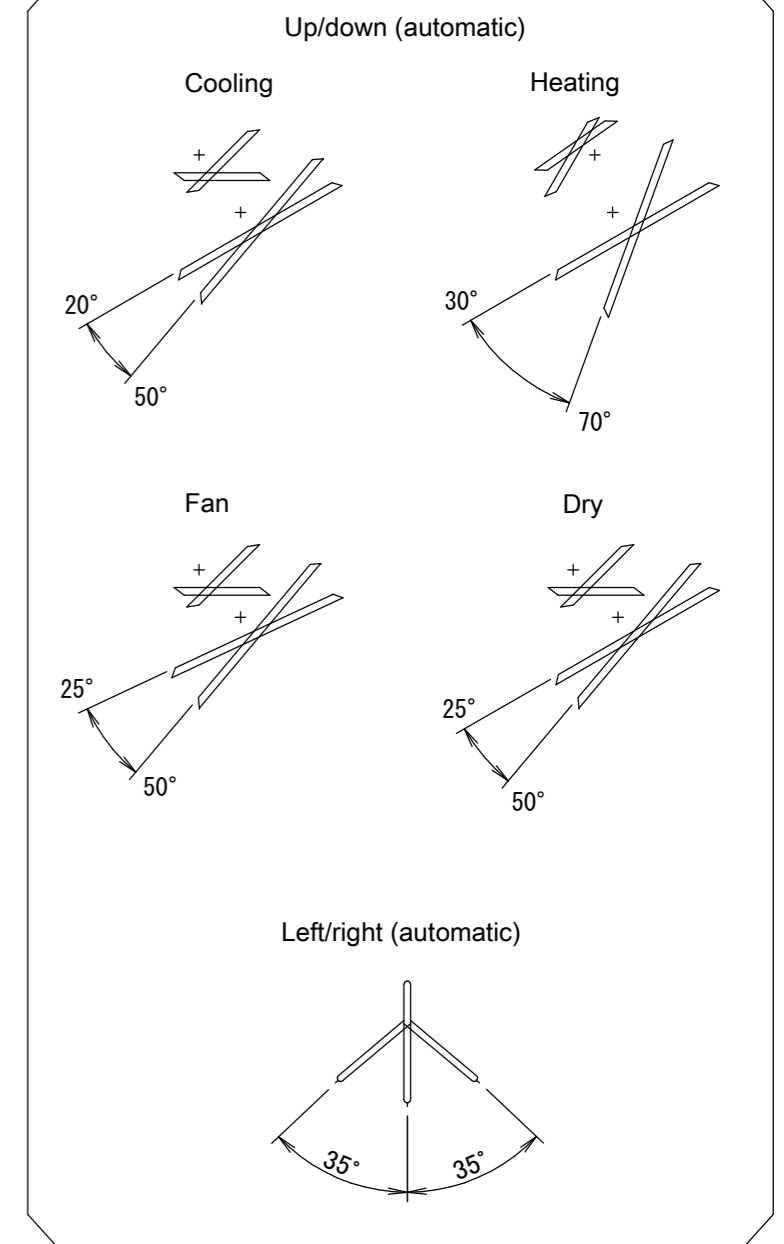
1. The  $(\rightarrow)$  mark shows the piping direction.
2. In this case, the optional grille is required.
3. In this case, cut the grille according to the paper pattern.

**Wireless remote control**

(ARC466A9)



**Blade angle**



**Required space for service and ventilation**

